

## RTB Series Cabinet



### STANDARDS

Meet ANSI/EIA RS-310-D  
DIN41491/PART1/ IEC297/  
PRAT7/GB/T3047 requirement  
Compatible with 19" International  
Standard, the ETSI Standard

### FEATURES

- Steel Frame
- Tempered glass front and Metal rear door
- Removable side door
- Max. Static load 800KG.

### MATERIALS

- SPCC high-quality cold roll steel
- Thickness: Mounting Rails 2.0mm
- Mounting angle 1.5mm others 1.2mm

Front Door

## RS Series Cabinet



### STANDARDS

Meet ANSI/EIA RS-310-D  
DIN41491/PART1/ IEC297/  
PRAT7/GB/T3047 requirement  
Compatible with 19" International  
Standard, the ETSI Standard

### FEATURES

- Steel Frame
- Tempered glass front and Vented rear door
- Removable side door
- Max. Static load 800KG.

### MATERIALS

- SPCC high-quality cold roll steel
- Thickness: Mounting Rails 2.0mm
- Mounting angle 1.5mm others 1.2mm

Front Door

Rear Door

## RV Series Cabinet



### STANDARDS

Meet ANSI/EIA RS-310-D  
DIN41491/PART1/ IEC297/  
PRAT7/GB/T3047 requirement  
Compatible with 19" International  
Standard, the ETSI Standard

### FEATURES

- Steel Frame
- Vented Hole front and rear door
- Removable side door
- Max. Static load 800KG.

### MATERIALS

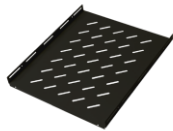
- SPCC high-quality cold roll steel
- Thickness: Mounting Rails 2.0mm
- Mounting angle 1.5mm others 1.2mm

Front Door

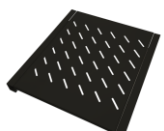
Rear Door

## Accessories

Fixed Shelf  
NFS60B



Sliding Shelf  
NSS60B



Keyboard Drawer  
UKBDB



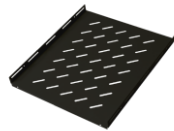
Model	U	H	W	D	Fixed Shelf	AC Fan	M6 Screw
RT6618B	18	988	600	600	1	2	20
RT6622B	22	1163	600	600	1	2	20
RT6627B	27	1388	600	600	1	2	20
RT6632B	32	1610	600	600	1	2	20
RT6637B	37	1833	600	600	2	2	40
RT6642B	42	2055	600	600	2	2	40

## Notes

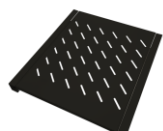
\*Other U-count, width, depth models enquiries and requests are welcomed.

## Accessories

Fixed Shelf  
NFS60/80/90/100B



Sliding Shelf  
NSS60/80/90/100B



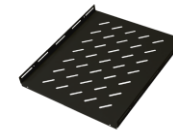
Keyboard Drawer  
UKBDB



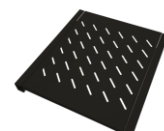
Model	U	H	W	D	Fixed Shelf	AC Fan	M6 Screw
RS6618B	18	988	600	600	1	2	20
RS6818B			600	800	1	4	20
RS6622B			600	600	1	2	20
RS6822B	22	1163	600	800	1	4	20
RS6922B			600	900	1	4	20
RS6022B			600	1000	1	4	20
RS6627B			600	600	1	2	20
RS6827B	27	1388	600	800	1	4	20
RS6927B			600	900	1	4	20
RS6027B			600	1000	1	4	20
RS6632B			600	600	1	2	20
RS6832B	32	1610	600	800	1	4	20
RS6932B			600	900	1	4	20
RS6032B			600	1000	1	4	20
RS6637B			600	600	2	2	40
RS6837B	37	1833	600	800	2	4	40
RS6937B			600	900	2	4	40
RS6037B			600	1000	2	4	40
RS6642B			600	600	2	2	40
RS6842B	42	2055	600	800	2	4	40
RS6942B			600	900	2	4	40
RS6042B			600	1000	2	4	40

## Accessories

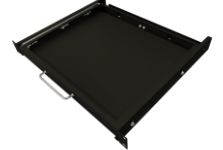
Fixed Shelf  
NFS60/80/90/100B



Sliding Shelf  
NSS60/80/90/100B



Keyboard Drawer  
UKBDB



Model	U	H	W	D	Fixed Shelf	AC Fan	M6 Screw
RV6618B	18	988	600	600	1	2	20
RV6818B			600	800	1	4	20
RV6622B			600	600	1	2	20
RV6822B	22	1163	600	800	1	4	20
RV6922B			600	900	1	4	20
RV6022B			600	1000	1	4	20
RV6627B			600	600	1	2	20
RV6827B	27	1388	600	800	1	4	20
RV6927B			600	900	1	4	20
RV6027B			600	1000	1	4	20
RV6632B			600	600	1	2	20
RV6832B	32	1610	600	800	1	4	20
RV6932B			600	900	1	4	20
RV6032B			600	1000	1	4	20
RV6637B			600	600	2	2	40
RV6837B	37	1833	600	800	2	4	40
RV6937B			600	900	2	4	40
RV6037B			600	1000	2	4	40
RV6642B			600	600	2	2	40
RV6842B	42	2055	600	800	2	4	40
RV6942B			600	900	2	4	40
RV6042B			600	1000	2	4	40

# RWB Series WallMount Cabinet



### STANDARDS

Meet ANSI/EIA RS-310-D  
DIN41491/PART1/ IEC297/  
PRAT7/GB/T3047 requirement  
Compatible with 19" International  
Standard, the ETSI Standard

### FEATURES

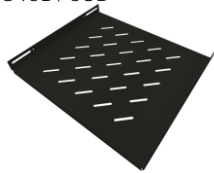
- Steel Frame
- Tempered glass front
- Removable side door
- Max. Static load 500KG.

### MATERIALS

- SPCC high-quality cold roll steel
- Thickness: Mounting Rails 2.0mm
- Mounting angle 1.2mm

## Accessories

**Fixed Shelf**  
FS45B / 6UB



**AC220V Top-mount  
Cooling Fan**  
ACF2B



Model	U	H	W	D	Fixed Shelf	AC Fan	M6 Screw
RW6404B	4	278	600	450	0	0	10
RW6406B	6	367	600	450	0	0	10
RW6606B	6	367	600	600	0	0	20
RW6409B	9	500	600	450	0	0	10
RW6609B	9	500	600	600	0	0	20
RW6412B	12	650	600	450	0	0	20
RW6612B	12	650	600	600	0	0	20
RW6415B	15	775	600	450	0	0	20
RW6615B	15	775	600	600	0	0	20
RW6418B	18	908	600	450	0	0	20
RW6618B	18	908	600	600	0	0	20

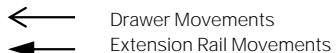
Distributed by:

**INTELLITECH SYSTEM 博智科技**  
深水埗 高登電腦中心1樓7-8號舖  
Sham Shui Po Shop 7-8, 1/F, Golden Shopping Centre  
TEL: 2729 1822 FAX: 2729 1016  
**灣仔 電腦城2樓225號舖**  
Wan Chai Shop 225, 2/F, Wan Chai Computer Centre  
TEL: 2838 0755 FAX: 2838 0557

Website:

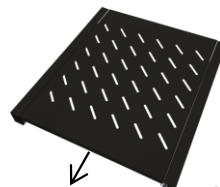
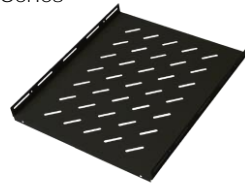


rackcom.net



## Shelf for Rackcom RT / RS / RV Racks

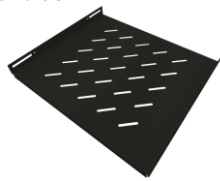
NFS-Series



NSS-Series

## Shelf for Rackcom RW Racks

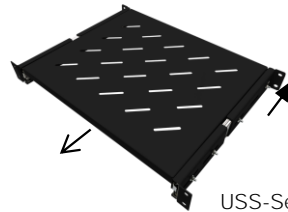
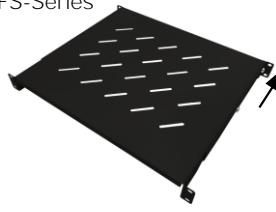
FS45B / 6U



CMFS15B

## Universal Shelf (For 19" Rack Width)

UFS-Series



USS-Series

Model	Design for	U	W	D	Min D	Max D	Load (KG)
<b>RT / RS / RV Floor Shelf</b>							
NFS60B	600D			350			
NFS80B	800D	1	470	550			80
NFS90B	900D			650			
NFS100B	1000D			730			
NSS60B	600D			350			
NSS80B	800D	1	420	550			30
NSS90B	900D			650			
NSS100B	1000D			730			
<b>RW Wallmount Shelf</b>							
FS45B	450D	1	470	276			30
6UB	600D			430			40
<b>Universal Shelf (For 19" Rack Width)</b>							
UFS60B	600D			400	400	520	
UFS80B	800-900D	1	440	580	580	700	30
UFS100B	1000D			730	730	845	
USS60B	600D			350	350	475	
USS80B	800-900D	1	408	550	580	700	30
USS100B	1000D			730	730	845	
<b>Cantilever Shelf</b>							
CMFS15B		1.5	443	350			30

## Rackmount Drawer

RD-Series



UKBDB

## Wallmount Bracket

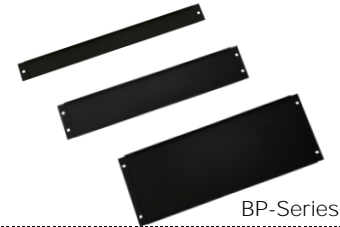
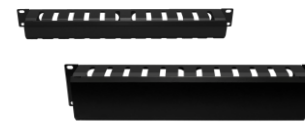
WB-Series



ACF1UB

## Management Panel

CM-Series



BP-Series

Model	Design for	U	W	D	Min D	Max D	Load (KG)
<b>Rackmount Drawer</b>							
RD2B		2					
RD4B		4	440	410			30
<b>Keyboard Drawer</b>							
UKBDB		1	437	410			20
<b>Wallmount Bracket</b>							
WB2020B		2		200			
WB2030B		2	600	300			
WB4020B		4		200			30
WB4030B		4		300			
<b>AC Fan Unit</b>							
ACF1UB		1	442	452	417	668	
<b>Cable Management</b>							
CM1U	20 Cables	1			70		
CM2U	40 Cables	2					
<b>Blank Panel</b>							
BP1UB		1					
BP2UB		2					
BP3UB		3					
BP4UB		4					